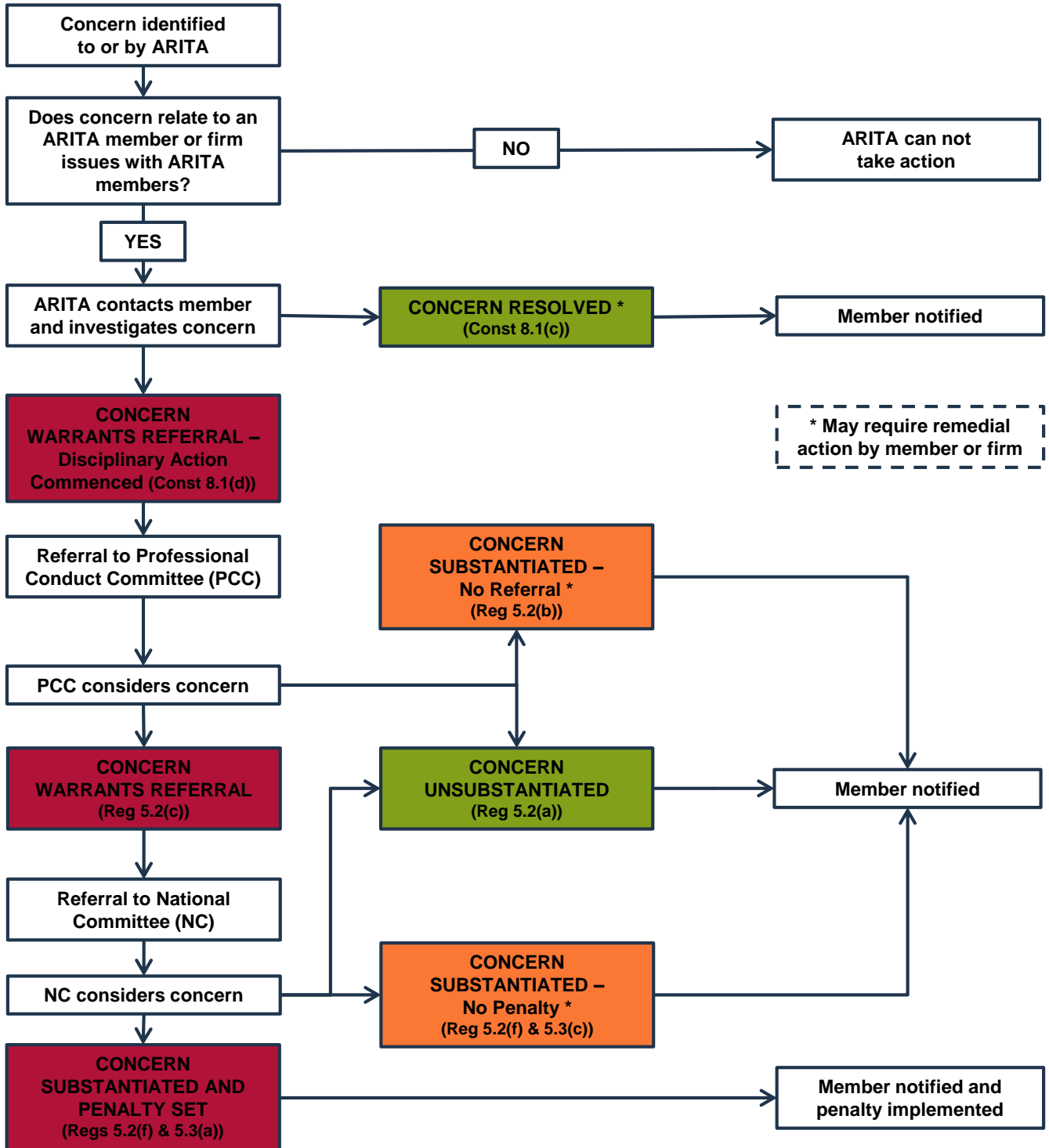


ARITA Concerns Investigation Process - Overview



Concerns: matters identified to or by ARITA about the professional conduct of a member as a practitioner other than by way of a complaint, such as media articles and general feedback from external parties.

Timeframe: the majority of concerns are addressed within 3 months, delays in obtaining information and more complex concerns (such as those referred to the PCC and NC) may require additional time.